

# M60/M62/M66 Simister Island Interchange

TR010064

## ENVIRONMENTAL STATEMENT FIGURES CHAPTER 15 ASSESSMENT OF CUMULATIVE EFFECTS

APFP 5(2)(a)

Planning Act 2008

Infrastructure Planning (Applications: Prescribed  
Forms and Procedure) Regulations 2009

Infrastructure Planning

Planning Act 2008

**The Infrastructure Planning  
(Applications: Prescribed Forms and  
Procedure) Regulations 2009**

**M60/M62/M66 Simister Island Interchange**  
Development Consent Order 202[ ]

---

**ENVIRONMENTAL STATEMENT FIGURES**  
**CHAPTER 15 ASSESSMENT OF CUMULATIVE EFFECTS**

---

<b>Regulation Reference</b>	5(2)(a)
<b>Planning Inspectorate Scheme Reference</b>	TR010064
<b>Application Document Reference</b>	TR010064/APP/6.2
<b>Author</b>	M60/M62/M66 Simister Island Interchange Costain Jacobs Partnership Project Team & National Highways

<b>Version</b>	<b>Date</b>	<b>Status of Version</b>
P02	January 2025	EXAMINATION DEADLINE 5 UPDATE

## **CONTENTS**

<b>Environmental Statement Figures Chapter 15 Assessment of Cumulative Effects.....</b>	<b>1</b>
---	----------

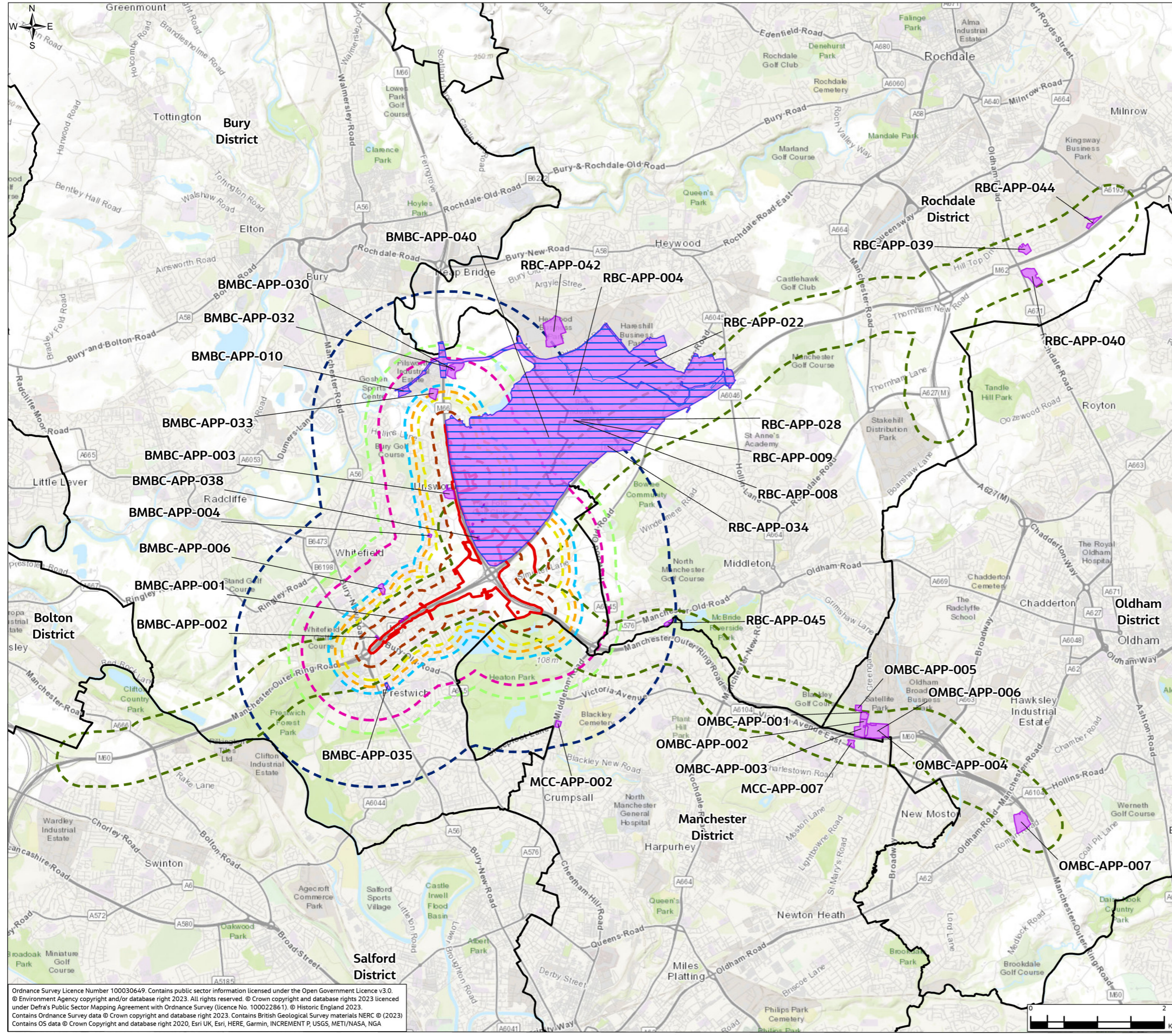
## **Environmental Statement Figures Chapter 15 Assessment of Cumulative Effects**

1.1.1 This document contains the following figures:

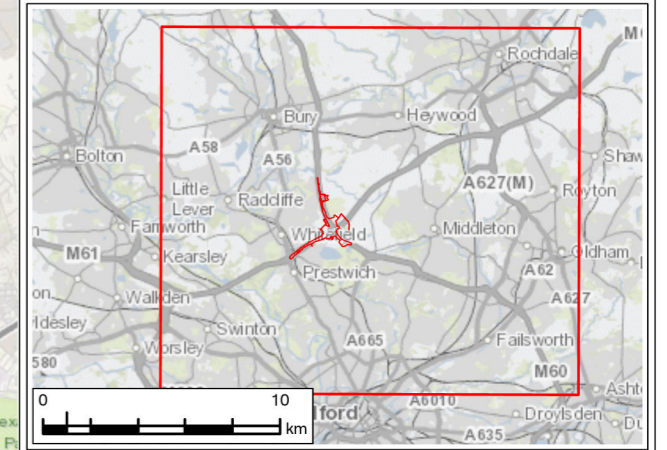
- Figure 15.1 Shortlisted Other Developments for Inter-project Cumulative Effects Assessment



**FIGURE 15.1**



- Legend**
- Order Limits
  - Local Planning Authority Boundaries
  - Other Developments Progressed to Stages 3 & 4 of the CEA
  - Shortlist of Other Developments
- Zone of Influences (ZOIs)**
- Noise and Vibration (Construction Vibration) - 0.2km
  - Air Quality (Construction Dust) - 0.4km
  - Geology and Soils - 0.5km
  - Noise and Vibration (Construction Noise) - 0.6km
  - Cultural Heritage (Non-Designated Heritage Assets and Their Setting); Hydromorphology - 1km
  - Population and Human Health (Land Use and Community Health); Operational Noise - 1.2km
  - Landscape and Visual; Biodiversity; Population and Human Health (Physical Activity Opportunities); Flood Risk; Water Quality; Groundwater - 2km
  - Air Quality (Traffic Emissions) - 0.4km from Affected Road Network



P01	JAN 24	For DCO application	LT	MS	JR	BB
P02	JAN 25	Examination Deadline 5 Update	RW	MS	JR	BB
Rev.	Rev. Date	Purpose of revision	Drawn	Check'd	Rev'd	Appr'd
Development Consent Order Number: TR010064			Development Consent Order Drawing Number: 6.2			

Client **national highways**

Project **REGIONAL DELIVERY PARTNERSHIP  
M60/M62/M66 SIMISTER ISLAND INTERCHANGE**

Drawing Title **ENVIRONMENTAL STATEMENT  
SHORTLISTED OTHER DEVELOPMENTS FOR  
INTER-PROJECT CUMULATIVE EFFECTS ASSESSMENT**

Drawing Status		S4 – SUITABLE FOR STAGED APPROVAL	
Scale @ A3	1:55,000	DO NOT SCALE	
Jacobs No.	B36601FO	Rev	P02
Client No.	HE548642	Drawing Number HE548642-JAC-LDC-SII_MLT-SK-LE-0066	

Ordnance Survey Licence Number 100030649. Contains public sector information licensed under the Open Government Licence v3.0. © Environment Agency copyright and/or database right 2023. All rights reserved. © Crown copyright and database rights 2023 licensed under Defra's Public Sector Mapping Agreement with Ordnance Survey (Licence No. 100022861). © Historic England 2023. Contains Ordnance Survey data © Crown copyright and database right 2023. Contains British Geological Survey materials NERC © (2023) Contains OS data © Crown Copyright and database right 2020, Esri UK, Esri, HERE, Garmin, INCREMENT P, USGS, METI/NASA, NGA

© Copyright 2025 Jacobs UK Limited. The concepts and information contained in this document are the property of Jacobs. Use or copying of this document in whole or in part without the written permission of Jacobs constitutes an infringement of copyright. Limitation: This drawing has been prepared on behalf of, and for the exclusive use of Jacobs' Client, and is subject to, and issued in accordance with, the provisions of the contract between Jacobs and the Client. Jacobs accepts no liability or responsibility whatsoever for, or in respect of, any use of, or reliance upon, this drawing by any third party.